

# Smart Drain Pro App Set Up

#1



## Plug in Smart Drain Pro

Connect the device to power and confirm the green LED is on.

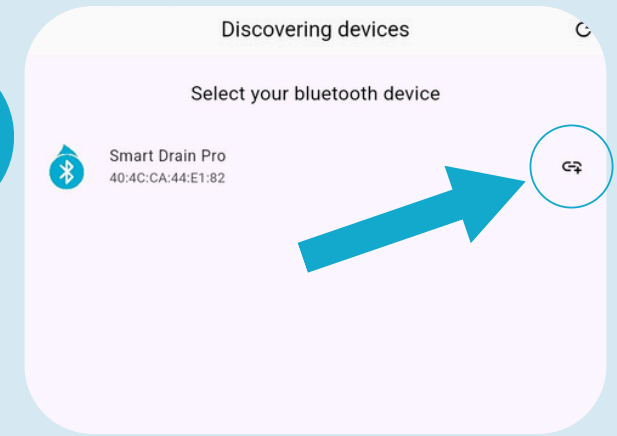
#2



## Download the App

Search for 'Smart Drain Pro' in the App Store or Google Play Store

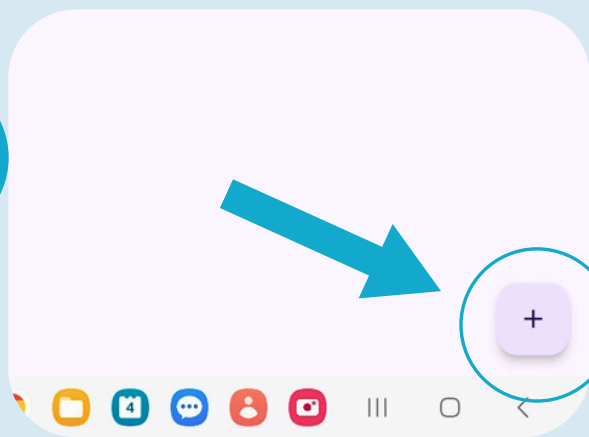
#3



## Configure Settings

Press the add icon on right side of Smart Drain Pro.

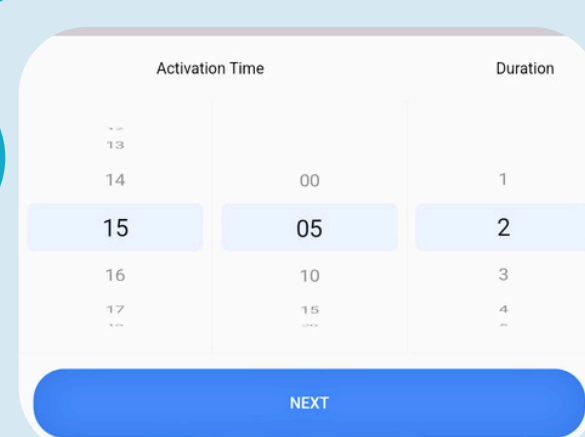
#4



## Add New Timestamp

On Device Settings Page, Hit "+" icon on bottom right corner.

#5



## Schedule Device

Choose time to open the valve and how long the valve should stay open.

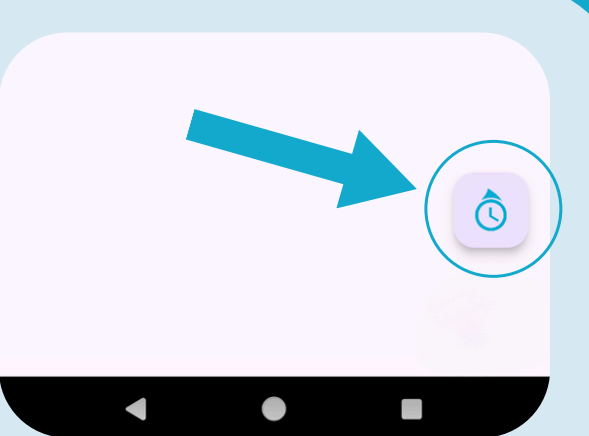
#6



## Choose the Day

Select the day of week to use Smart Drain Pro

#7



## Activate Timestamp

You **must** tap clock icon to activate timestamp to Smart Drain Pro.

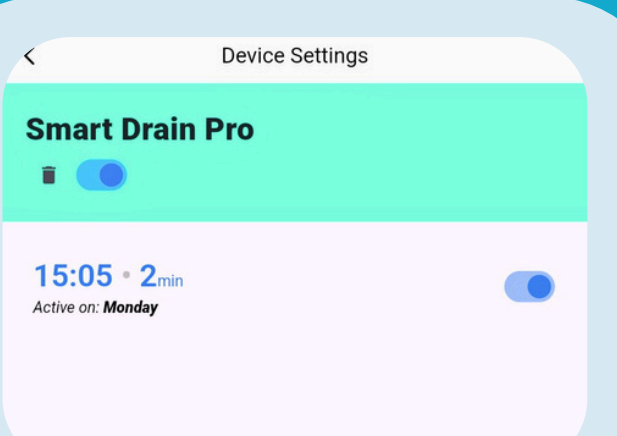
#8



## Confirmed Settings

Check Blue LED is illuminated on to confirm received settings.

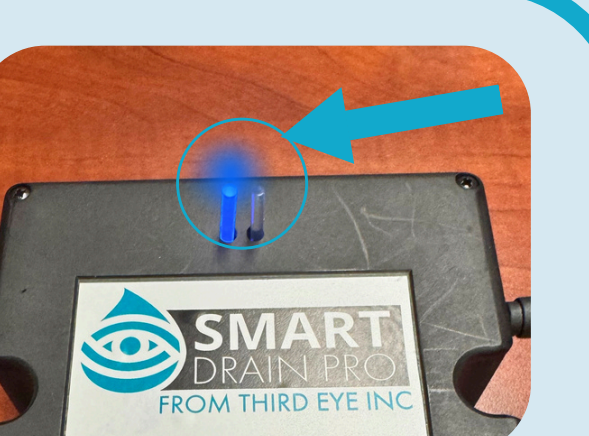
#9



## Ready to Drain

See Scheduled Time on Device Settings Page in App.

#10



## Flashing While Draining

Blue LED flashes while device is draining at scheduled time.

